

# There's an app for that... and that

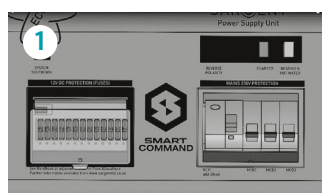
**Techno Tom Bedworth** looks at a brand-new system from Swift Group that looks set to revolutionise the way that you operate your motorhome's services

**A**t the October NEC show, Swift launched a handy new control-panel system that feels like a huge leap forward in technology. The product was the company's new Command system, and it's being rolled out on Swift's Kon-Tiki and Bolero motorhomes.

## How it works

Right at the heart of a motorhome's electrical system is a big box buried under a locker or in a garage; a data link then connects this to a control panel, usually over the entrance door. In Swift models the main box is the Sargent EC600 series (1), and it links to the new Command control panel using a CAN two-wire data bus.

Another addition to this system is the EC640 communications module: it allows all of the control panel's features to be accessed via your mobile (2). The SIM card supplied within the module is pre-paid



for three years, while the remote communication is either by Bluetooth or the mobile phone network.

Using your phone, you can set up timers for the heating for up to a week in advance, look at your service history, control the 'van's lights and the water pump, check the vehicle's exact position and see where it is on a map. It's also possible to monitor the various fluid levels and battery charging.

There's more, too: you can even use your smartphone to set maximum limits for your mains-power consumption. So when you're on a site with – for example – a 6A limit, the system will temporarily switch off loads such as the heating when you put the kettle on.

Currently Swift Command gives you access to, and



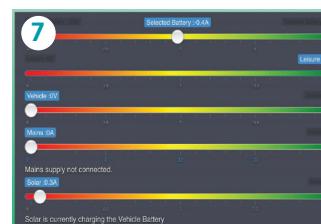
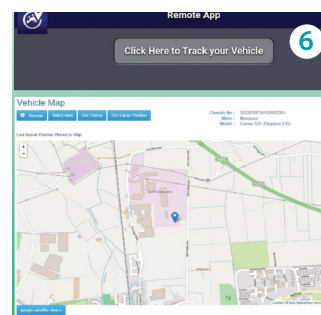
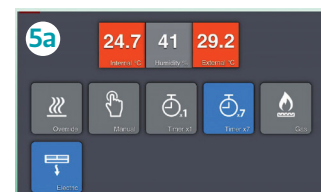
control of, the following systems in your 'van:

- Lighting (3)
- The water system (4)
- Heating (5a & 5b)
- Vehicle tracking (6)
- Power limitation (7)
- Alerts and notifications
- Account and system settings
- User manual
- Swift's website.

## All-round benefits

Interestingly, Swift will also benefit from the installation of the system: it will be possible to track the motorhome, and find out where every vehicle fitted with Command is at any given time. However, this can really only be seen as a good thing: the input means that system could alert you to any relevant recalls, or similar. Given this level of communication, it's evident that the possibilities of the system are only limited by the imagination of the engineers and software writers. ☺

The Command app (left) is really straightforward to use, and presents you with all the data (below) that you need to know about your 'van



## THE TRUMA OPTION

A similar system is Truma's iNet module: it connects to the heating and air-conditioning via TIN BUS, and to your smartphone via Bluetooth and the mobile network. Truma plans to extend the range of equipment that's controllable via iNet to include levelling systems, and perhaps even fluid-level sensing. To use iNet you'll need the



Truma iNet box, a suitable smartphone, and a mini SIM card with its own number. You can find out more by visiting <http://bit.ly/1MkLEio>.