



DATE: 2023-08-10

MODEL: ALL

ELECTRICAL GROUND POINTS

PRIORITY – MEDIUM (MONITOR)

Customers are reminded to check earth point connections as part of routine major workshop services. Electrical ground points on Radical cars are exposed to all kinds of weather conditions, dust, moisture and vibration. All these factors can have a negative effect on the quality of electrical ground which can cause electrical issues.

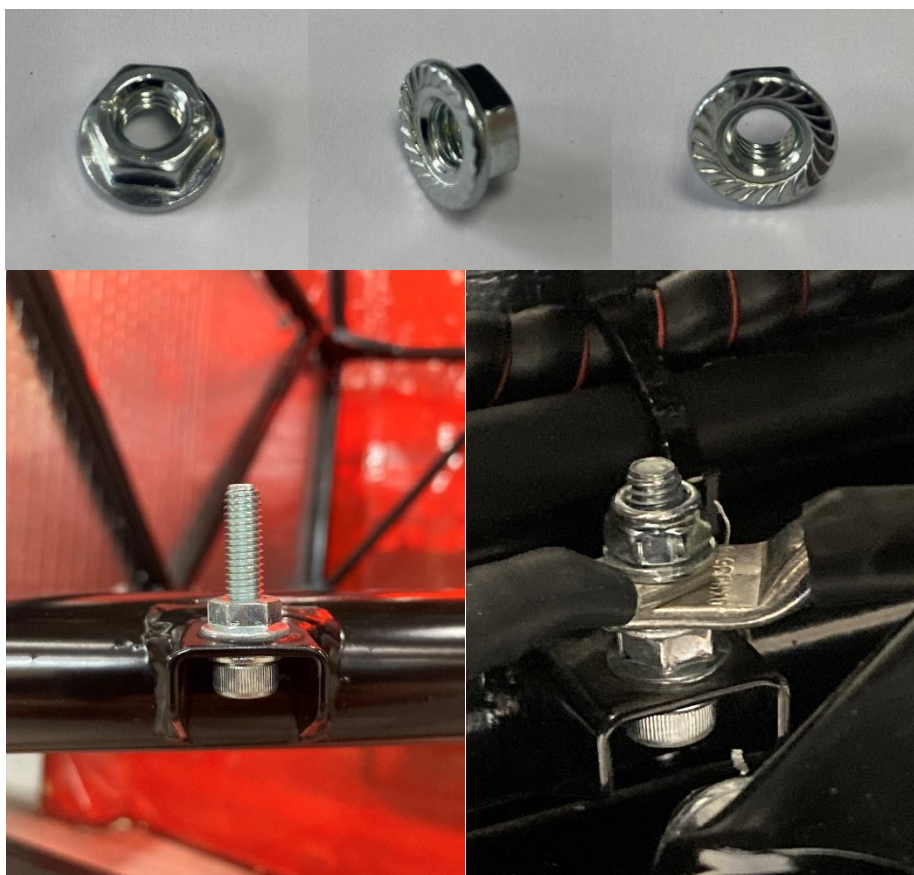
To improve ground contact Radical has started to fit serrated flange nuts in place of regular nylock nuts. Radical part number **7M06/071**.

Notes:

Ensure the contact area between chassis and ground posts are free of moisture, rust, paint, debris and the fastener is properly tightened.

Terminals should be secured with a nylock nut in combination with a plane washer to avoid any damage to these terminals.

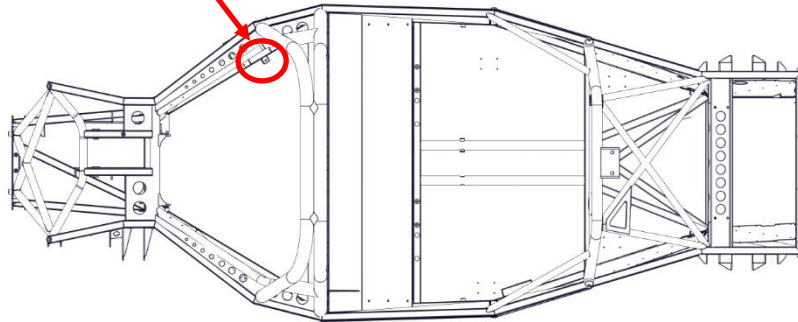
The cleanliness of all terminals is equally important.



Locations of electrical ground points per model

All SR1 Models

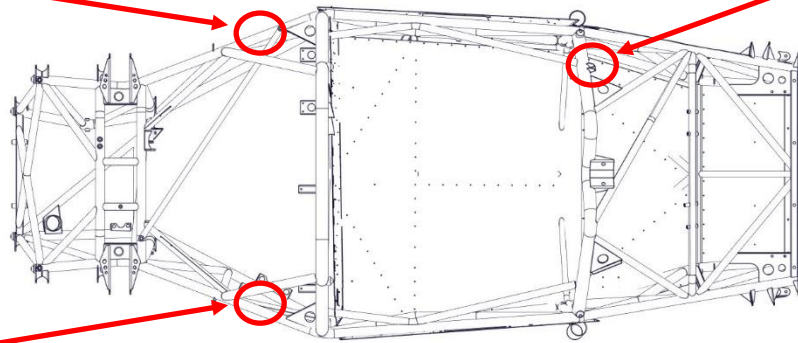
SR1



SR3 RS, RSX, XX, XXR

SR3

SR3 XXR



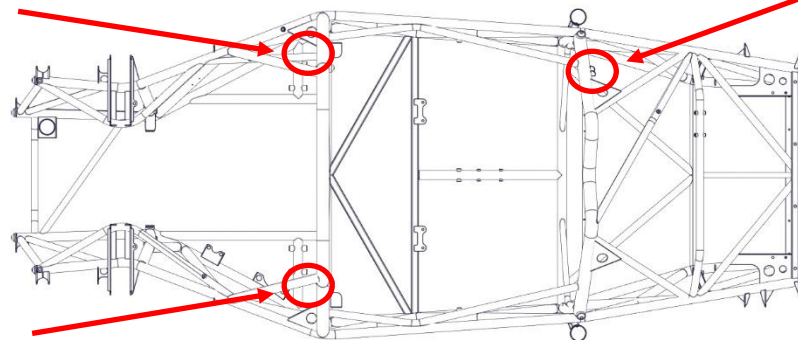
SR3 XXR

All SR10

SR10

SR10 XXR

EPAS use only



All SR10