

**DOWNLOAD INSTRUCTIONS**

Download the latest Life Racing software from <http://www.radicalsportscars.com/downloads/>

Connect the ECU download lead (LH0168) to the car and laptop

Turn on the car's master switch

Open **LifeData**

CHOOSE WHERE YOU ARE GOING TO SAVE THE DATA:

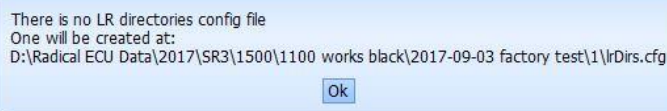
Select **File > Working directory**

SELECT or **CREATE** new folder location eg:

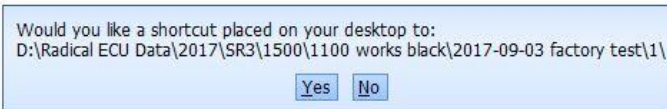
D:\Radical ECU Data\Year\Car model\Engine specification\Chassis number\Date & location

Once in the desired locations choose **SELECT**

You will then be told a config file is being made in this location.



You will then be asked if you want to create a shortcut to this folder location. Select **NO**



DOWNLOAD THE DATA:

Select **Device > Read Data**

The software will then connect to the ECU and show you the below options



Click **OK** and the run files and Logbook will download.

VIEW THE DATA IN LIFE DATA

Open LifeView

Select **File > Load** and navigate to the location you have downloaded the data to, select the appropriate according to the download date and time.

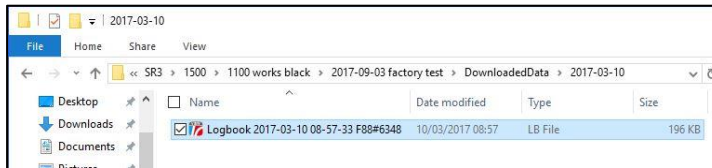
The data will then open for review in **LifeView**

To make viewing the data easier, Radical Template Worksheets can be downloaded from the radical website:
<http://www.radicalsportscars.com/downloads/>

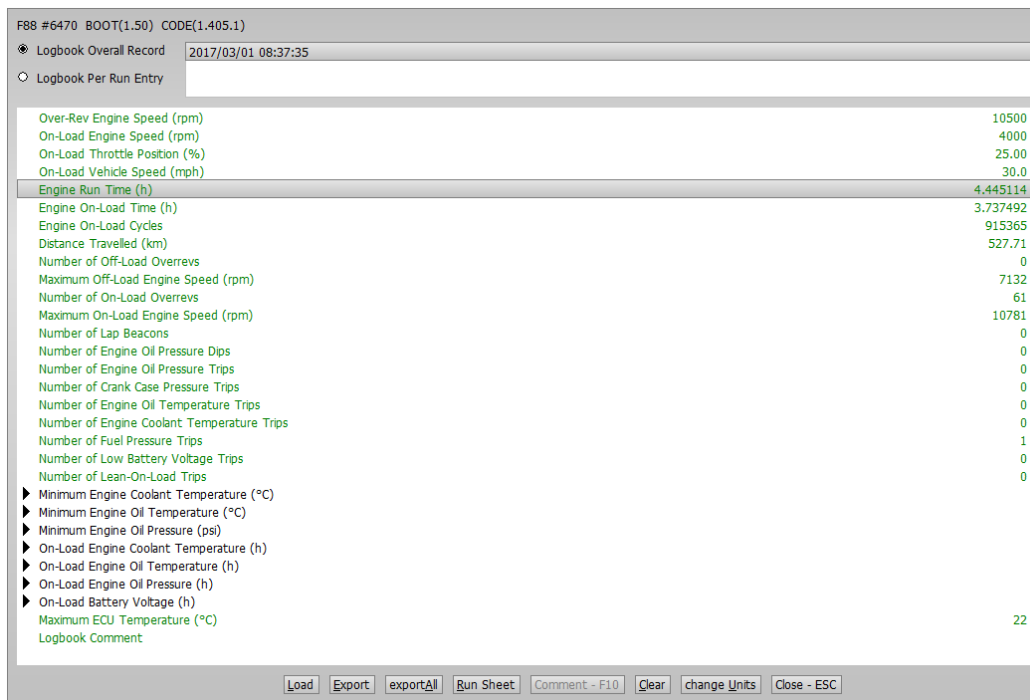
REVIEW THE LOGBOOK

Using the normal Windows file explorer, navigate to the most recent download folder for the ECU

Double click on the latest logbook (.LB) file



The Logbook will then open in LifeView



From here LogBook parameters, engine hours and overall recordings can be found.
For warranty purposes RPE will reference the total **Engine Run Time** (selected above)
Units can be changed using the option at the bottom of the screen