



Auto-Sleepers  
MOTORHOMES OF EXCELLENCE

# Dream Discover Explore



**2019** | Collection  
**Mercedes Coachbuilts**  
*Made in Great Britain*

# Ultimate Luxury



## Mercedes Coachbuilts

Lavish styling combined with exceptional specification and unrivalled driving performance all built on the Mercedes motorhome chassis for the ultimate in touring luxury. All Mercedes Coachbuilts come with the option of having the best fully automatic gearbox available on a motorhome.

Models

5

Min Berth



Max. Berth





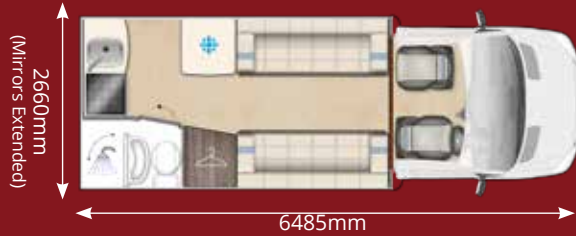
# The Range

*Quintessential Luxury*

## Bourton



Interior Layout >>



*Award Winning Classic*

## Winchcombe



Interior Layout >>



*Traditional French Bed*

## Malvern



Interior Layout >>



*Fixed Bed Ensuite*

## Burford



Interior Layout >>



*Twin Bed Ensuite*

## Burford Duo



Interior Layout >>



# Key Features >



**163BHP Mercedes Euro Engine**  
Drive with confidence, the 2019 Mercedes coachbuilt range features powerful 163bhp engines as standard.



**Fully Automatic 7-Speed Gearbox\***  
Mercedes coachbuilt models can be fitted with Mercedes' latest 7-speed automatic gearbox as part of the premium pack upgrade.



**Truma Aventa Comfort (optional)**  
Enjoy a pleasant indoor climate thanks to the Truma Aventa Comfort roof-mounted air conditioning system.



**Grade 3 Fully Insulated**  
All our coachbuilts feature Grade III Classification for heating and thermal insulation.



**80W Solar Panel**  
Be more self-sufficient and save money on your next holiday thanks to the included Solar Panel.



**Underfloor Mounted LPG Tank**  
25 litre underfloor mounted LPG gas tank installed, offering hassle free practicality with numerous benefits



wired for innovation

**GPS Sargent CAT6 Tracker Pre-Installed (£95 Annual Subscription applicable)**  
Auto-Sleeper motorhomes are protected 24/7 with the Sargent CAT 6 Tracker. Annual subscription fee of £95 is applicable.



**NCC Approved & Full UK Specification**

- Rigorously tested
- Is safe & legal for use on UK roads
- Has met all NCC approval standards
- Is certified safe for you & your family



**The MBUX infotainment system with 7-inch touchscreen**  
State-of-the-art MBUX technology debuts in the 2019 Mercedes coachbuilts. It offers intuitive touch control and enables Mercedes PRO connect services.

Find Out More: [www.auto-sleepers.com](http://www.auto-sleepers.com) Call: +44 (0)1386 853 338



# Specification >

## The Best Sprinter Of All Time >>

### Better. Connected.

The 2019 Auto-Sleepers Mercedes-Benz range is built on the all new Sprinter Chassis; The most intelligent, powerfully connected van the world has ever seen. The result of Mercedes continuous development process of ensures that the new class leading Sprinter is even more advanced, even more flexible, even safer and even more economical.

### Mercedes-Benz User Experience (MBUX)

State-of-the-art MBUX technology debuts in the new Sprinter. Fitted as standard with a high resolution 7-inch touchscreen, it offers intuitive touch control and enables Mercedes PRO connect services.

### Your Safety Is Our Highest Priority.

The new Sprinter leads the way when it comes to safety and security, with a powerful suite of standard features – including Active Brake Assist as well as a reassuring alarm, double lock and visible VIN.

## Even Better Features >>



### Keyless Start

Start your vehicle at the push of a button.



### Electric Parking Brake

Parking brake operated simply and conveniently via a button.



### MBUX

A high resolution 7" touchscreen offering intuitive controls and Mercedes PRO connect services.



### Multi-Function Steering Wheel with Gearshift Paddles

All controls, all in one place, for a streamlined cabin and safe operation while driving.



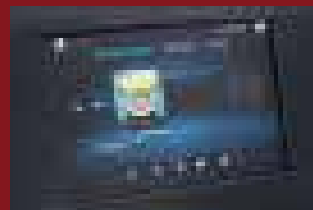
### Crosswind Assist & Adaptive ESP®

Our Mercedes Coachbuilds feature the latest technology to help keep you safe on the road.



### Highbeam Assist

This feature automatically detects oncoming vehicles and dims full beam at night.



### DAB Radio

The new Sprinter is the first to receive DAB radio as standard



### 3rd Generation SCR Emission Control System

Stringent Euro 6 emissions standard is met with the aid of the SCR (Selective Catalytic Reduction) technology.

## Underfloor Mounted LPG Tank >>

All 2019 Auto-Sleeper Mercedes Coachbuilds have a 25 litre underfloor mounted LPG gas tank installed, offering hassle free practicality with numerous benefits including -

- Readily available from 1000's of petrol stations throughout Great Britain and Europe.
- Convenience personified, refilling them is as easy as filling the fuel tank
- No heavy bottles to lift, carry or manhandle
- No middle of the night change overs required
- Economical to use at approximately half the cost of cylinders, cost per litre typically only 60p
- Interior space saving, the tank is externally mounted to the underside of the Motorhome
- Easy read LED tank gauge and an Auto-Stop feature to prevent any chance of overfilling
- Reliable and safety proven, extensively tested for peace of mind and fully approved under European Whole Vehicle Type Approval Legislation.

## Base Vehicle Specification

- **Next Generation Euro 6.2 turbo diesel 163bhp engine**
- Optional upgrade to V6 190bhp engine#
- Optional 7-speed fully automatic gearbox#
- **Sargent CAT6 Vehicle Tracker Pre-Installed (£95 Annual Subscription Applicable)**
- Alloy wheels\* plus spare wheel & carrier
- Cruise control\*
- Cab air conditioning\*
- ESP with active skid control
- **MBUX infotainment system with 7-inch touchscreen featuring Apple CarPlay, Android Auto, DAB radio and Satellite Navigation Upgrade\***
- ABS brakes with EBD
- Black high gloss dashboard fascia
- Colour co-ordinated bumpers
- Single key central locking for cab and habitation door
- Electrically heated and adjustable door mirrors
- Electric cab windows
- Front fog lights#
- Rear fog lights
- Lockable glove box
- 12v socket
- UV filtering tinted glass
- Driver and passenger airbags
- Driver and passenger seat armrest
- Power assisted steering

## Exterior General

- **Metalarte exterior door c/w sliding door flyscreen & central locking**
- 25 Litre underfloor mounted LPG gas tank
- Full GRP body including roof and rear panel
- Full scratch and impact resistant GRP body with platinum sides including GRP Rear Panel with Hella LED Lights
- Skyview wind-up opening rooflight\*\*
- Aluminium skirts
- Large external skirt locker (under-floor mounted)
- Drop down access door to nearside seating
- **Colour reversing camera with rear view mounted LCD screen\***
- 80W solar panel\*
- Thule (Omnistor) roof mounted canopy awning\*
- LED strip awning light
- Colour co-ordinated external TV socket
- Colour co-ordinated external gas BBQ point
- Colour co-ordinated external 230v mains socket
- Double-glazed opening windows with concertina blinds & flyscreens
- Maxview TV aerial
- Electric slide-out entrance step with auto retract on engine start
- Rear mud-flaps
- Rear corner steadies

## Interior General

- Luxurious **Santani** or Valencia furniture with chrome fixtures and fittings
- Panoramic wind-up opening rooflight\*\*
- Privacy blinds & flyscreens to all opening windows
- Choice of Designer 'Catalan', 'Casa Milà' or 'Sagrada' fabrics providing luxurious interior soft furnishings
- High quality Reflex™ foam upholstery
- Colour co-ordinated habitation curtains with tiebacks and scatter cushions
- Chrome grab handle with LED lights
- Removable interior carpets
- LED spotlights and roof lighting with a power saving of up to 70%
- Over locker LED mood lighting
- Seat tops on gas struts and drop down access door to under-seat storage space (model specific)
- Swivel cab seats on all front lounge models
- Over-cab storage compartments
- Spacious wardrobe
- Range of high & low-level storage lockers
- Cocktail cabinet with crystal wine glasses
- Freestanding table
- Foot-well entry step with AS logo light
- Smoke and carbon monoxide alarms
- Fire extinguisher

## Electrics + Plumbing

- **Sargent EC700 electrical system with LCD control panel**
- Split charged leisure battery
- Four 230v sockets
- Two 12v sockets
- Truma dual fuel combi blown air central heating and water heater
- Truma iNet Control Box
- Truma Aventa Comfort air-conditioning
- Large underslung fresh water tank (model specific)
- Large underslung waste water tank (model specific)
- Large bore waste pipework for efficient drainage
- Whale or Truma auto-fill & manual filler points for fresh water tank
- Drive Safe Regulator

## Kitchen

- Spacious and fully equipped with large slide out additional work surface
- Dual fuel hob with 3 gas burners and an electric hot plate plus separate oven and grill
- Dual level microwave oven
- Cutlery drawer
- 12v extractor fan with down-lighters
- Motique kitchen splashback
- Large refrigerator with freezer compartment
- Kitchen centre sink incorporating draining board and cutlery drying rack
- Kitchen roll holder
- Waste bin
- Melamine crockery set & cooler bag

## Bathroom

- Combined shower and toilet compartment
- Swing wall showers with integrated washbasin
- Vanity cupboard with mirrors
- Separate shower cubicle (Malvern, Winchcombe, Burford and Burford duo)
- Electric flush cassette toilet with separate header tank
- Chrome fixtures and fittings
- Storage cupboard
- Anti slip shower mat
- Ducted blown air outlet
- LED lighting
- Retractable clothes line (model specific)
- Roof vent with flyscreen

## Optional Upgrades >>

### Premium Pack

- 7-Speed fully automatic gearbox
- **MBUX infotainment system with 7-inch touchscreen featuring Apple CarPlay, Android Auto, DAB radio and Satellite Navigation Upgrade**
- Alloy wheels
- Cab air conditioning
- Cruise control
- Thule (Omnistor) canopy awning
- **Colour reversing camera with LCD screen\***
- 80W solar panel

### Winter Pack

- Versatile all season insulating silver screen in lieu of cab curtains
- Fresh & waste water tank heater blanket
- Truma Combi heater upgrade
- Wheel arch insulation blankets

### Media Pack

- Mecatronic 65cm Automatic Satellite System;

# Weights & Dimensions

Model	Van Conversions				
	Bourton	W'combe	Malvern	Burford	Burford Duo
Engine	163bhp Auto	163bhp Auto	163bhp Auto	163bhp Auto	163bhp Auto
Roof profile (low or overcab)	Low	Low	Low	Low	Low
Designated Passenger Seats (excl. driver )	1	1	1	1	1
Berths (sleeping positions)	2	2	4	4	4
Overall Length in mm**	6485mm 21'3"	7330mm 24'1"	7330mm 24'1"	7920mm 26'0"	7920mm 26'0"
Overall Width (mirrors folded)	2260mm 7'5"	2350mm 7'9"	2350mm 7'9"	2350mm 7'9"	2350mm 7'9"
Overall Width (mirrors extended)	2660mm 8'9"	2780mm 9'1"	2780mm 9'1"	2780mm 9'1"	2780mm 9'1"
Overall Height (incl TV aerial)	2860mm 9'5"	2860mm 9'5"	2860mm 9'5"	2880mm 9'6"	2880mm 9'6"
Internal Height (max)	1960mm 6'5"	1960mm 6'5"	1960mm 6'5"	1960mm 6'5"	1960mm 6'5"
Maximum Permissible Laden Mass (a) in kg	3500	4100	4100	4100	4100
Mass in Running Order (b) in kg	2983	3258	3241	3473	3403
Maximum User Payload (c) (c=a-b) in kg	517	842	859	627	697
Essential Habitation Equipment (d) in kg	17	25	17	17	17
Fresh Water Tank Size/ Waste Water Tank Size	62 litres/ 53 litres	91 litres/ 71 litres	91 litres/ 78 litres	91 litres/ 91 litres	91 litres/ 91 litres
<b>Bed Sizes</b>					
Front Double	2100 x 1920mm 6'11" x 6'4"	2210 x 1270mm 7'3" x 4'2"	2210 x 1220mm 7'3" x 4'0"	2210 x 1220mm 7'3" x 4'0"	2210 x 1220mm 7'3" x 4'0"
Rear Double	-	-	1980 x 1370mm 6'6" x 4'6"	1860 x 1300mm 6'1" x 4'3"	-
Nearside Single	1920 x 730mm 6'4" x 2'5"	1940 x 700mm 6'4" x 2'4"	-	-	1860 x 780mm 6'1" x 2'7"
Offside Single	1920 x 730mm 6'4" x 2'5"	1900 x 700mm 6'3" x 2'4"	-	-	1860 x 780mm 6'1" x 2'7"

The MRO is the mass of the unladen vehicle, including an allowance for the driver (assumed 75 kg) and a 90% full fuel tank. The MRO is calculated with the fresh water tank empty. If you travel with water in the freshwater tank then the User Payload will reduce accordingly.

The optional Comfort-Matic gearbox on the Fiat chassis will increase the MRO by 50 kg and therefore reducing the user payload by the same amount.

All masses and weights are subject to a tolerance of +/-5% complying with the European Directive 1230/2012. All motorhomes in this brochure conform to the European Standards for Motorhomes: EN1646 -1, EN 721, EN1949 and EN 1648-2. They have also been granted European Whole Vehicle Type Approval to EC Directive 2007/46. We would strongly advise against modifying vehicles in any way that could affect the validity of these Standards or Directives.

The Maximum User Payload includes:

- Conventional load, is the allowance for passengers
- Essential habitation equipment includes items and/or fluids required for safe and proper functioning of the habitation equipment.
- Optional equipment is items available from the manufacturer over and above the standard specification.
- Personal effects, items not effected by the above.